

San Joaquin County Annual STD Report

Data for 2009

Table 1: STDs in San Joaquin County, 2008 and 2009

	2008	2009
Gonorrhea	695	561
Chlamydia	3523	3481
Syphilis	39	65
1 & 2	7	25
Early latent	12	8
Unk. Latent	5	8
Late latent	15	24
Neuro	0	0
Congenital	0	0

Figure 1. STD cases in SJC by city of residence, January-December 2009

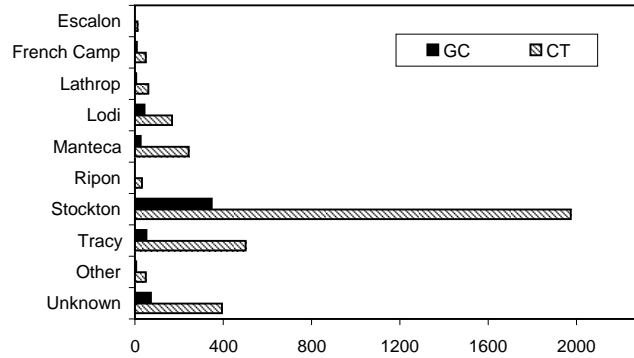


Figure 2. Monthly GC trends for SJC

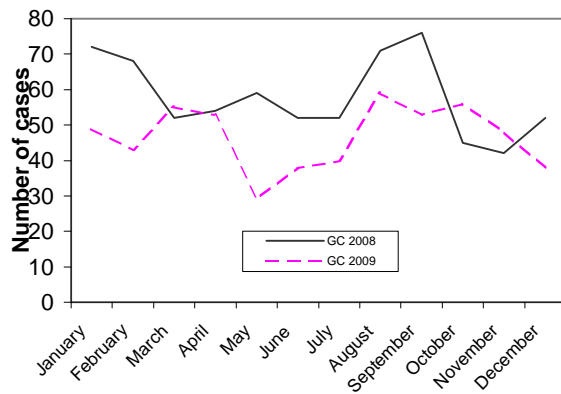


Figure 3. Monthly CT trends for SJC

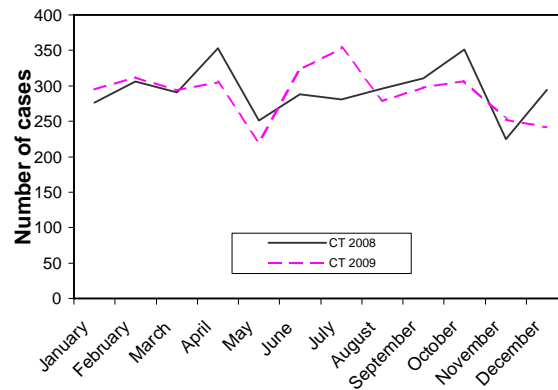


Table 2: Gonorrhea cases in SJC by age and gender, January-December 2009

Age category	Gonorrhea		
	Female	Male	Total
0-4	0	0	0
5-9	0	0	0
10-14	4	0	4
15-19	118	51	169
20-24	105	85	190
25-29	26	55	81
30-34	16	28	44
35-39	8	15	23
40-44	4	14	18
45-54	7	16	23
55-64	0	5	5
65+	0	1	1
unknown	0	0	0
TOTAL	288	270	558

*3 cases were of unknown gender

Table 3: Chlamydia cases in SJC by age and gender, January-December 2009

Age category	Chlamydia		
	Female	Male	Total
0-4	0	0	0
5-9	2	0	2
10-14	28	7	35
15-19	915	228	1143
20-24	888	378	1266
25-29	329	245	574
30-34	130	67	197
35-39	78	42	120
40-44	31	32	63
45-54	31	17	48
55-64	7	6	13
65+	1	2	3
unknown	2	2	4
TOTAL	2442	1026	3468

*13 cases were of unknown gender

Note: Morbidity is based on the date of report. Totals may change due to additions and/or deletions from the database.